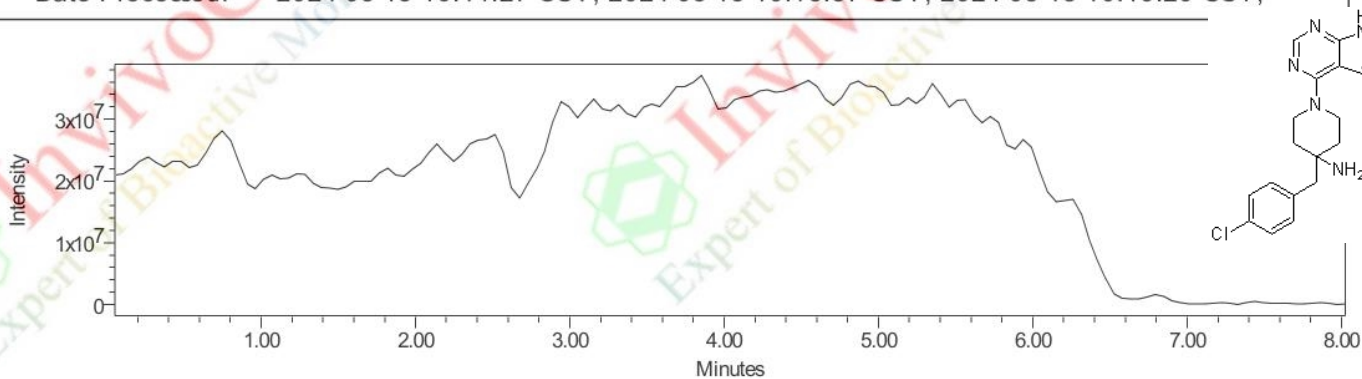


# LCMS Analysis for V016302 CCT128930

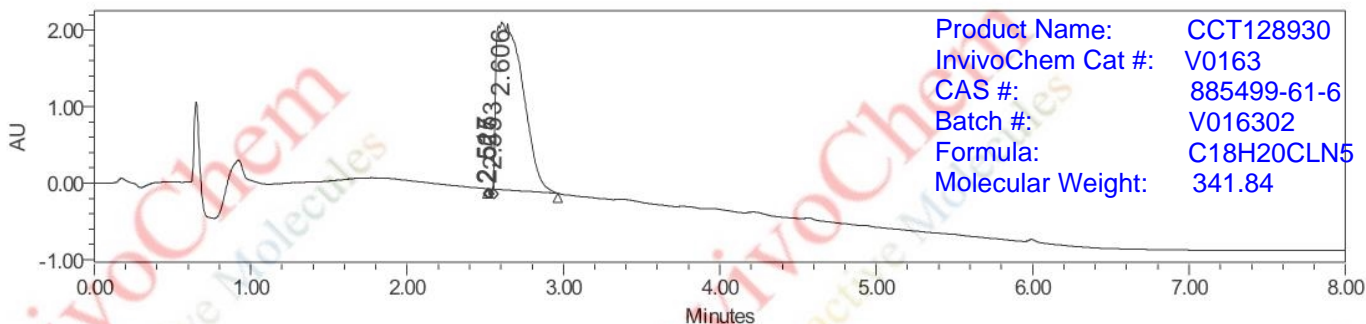
MS\_214\_254\_ES

## SAMPLE INFORMATION

Sample Type:	Unknown	Sample Set Name:	212
Vial:	115	Acq. Method Set:	
Injection #:	1	Processing Method:	20180404_214nm,
Injection Volume:	10.00 ul	Channel Name:	MS TIC, 2998 Ch2
Run Time:	8.0 Minutes	Proc. Chnl. Descr.:	ACQ-SQD2 1: MS Scan MS TIC,
Date Acquired:	2024-03-15 09:36:44 CST		
Date Processed:	2024-03-15 10:14:27 CST, 2024-03-15 10:15:37 CST, 2024-03-15 10:16:29 CST,		

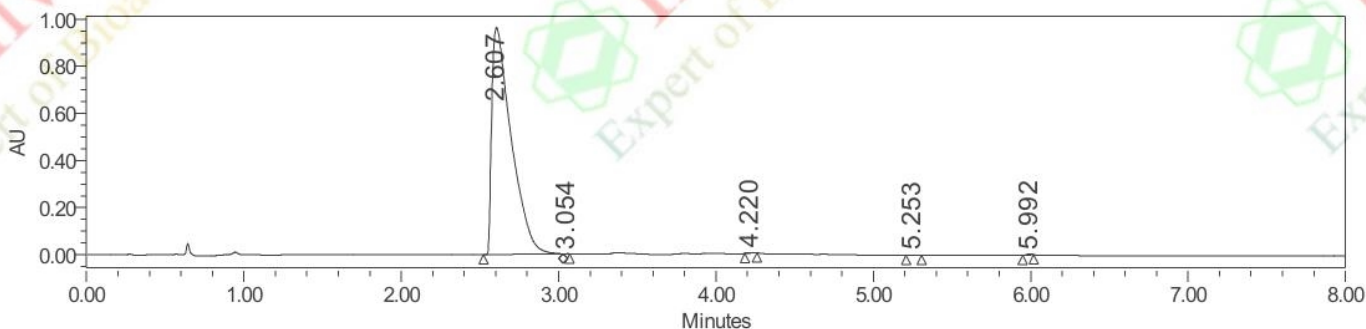


Sample Type Unknown; Channel Description 2: 100.00-2000.00 ES-, Centroid, CV=30



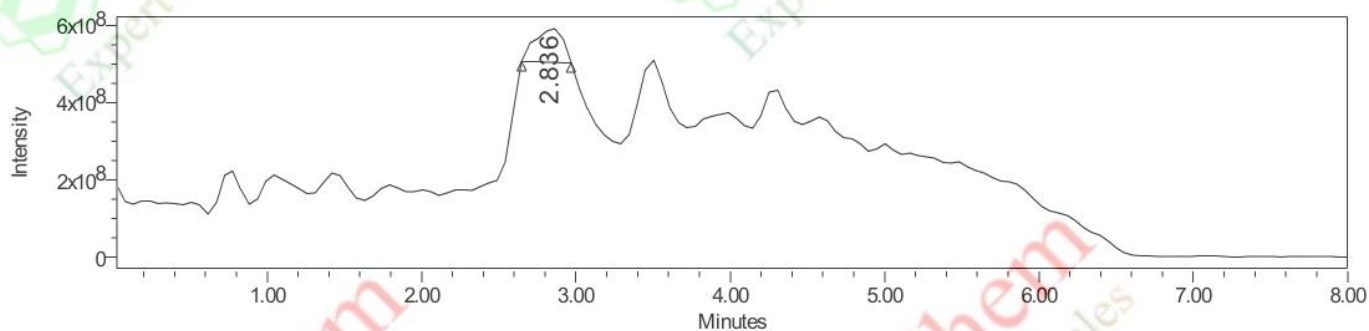
Product Name: CCT128930  
InvivoChem Cat #: V0163  
CAS #: 885499-61-6  
Batch #: V016302  
Formula: C18H20CLN5  
Molecular Weight: 341.84

Sample Type Unknown; Channel Description 2998 Ch2 214nm



Sample Type Unknown; Channel Description 2998 Ch1 254nm

# HPLC Analysis for V016302 CCT128930



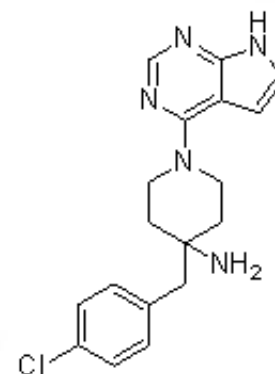
— Sample Type Unknown; Channel Description 1: 100.00-2000.00 ES+, Centroid, CV=30

Channel Description: 2998 Ch2 214nm

	Channel Description	RT	Area	% Area	Height	Base Peak (Combined) (m/z)
1	2998 Ch2 214nm	2.606	25964122	99.88	2188494	342.18

Channel Description: 2998 Ch1 254nm

	Channel Description	RT	Area	% Area	Height	Base Peak (Combined) (m/z)
1	2998 Ch1 254nm	2.607	8278495	99.77	963743	342.18

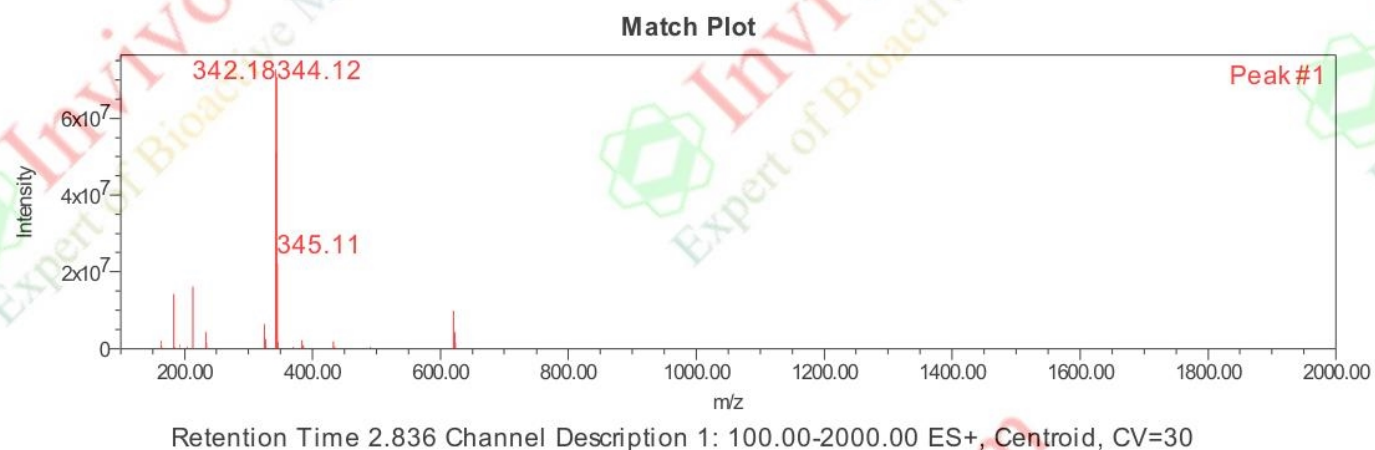
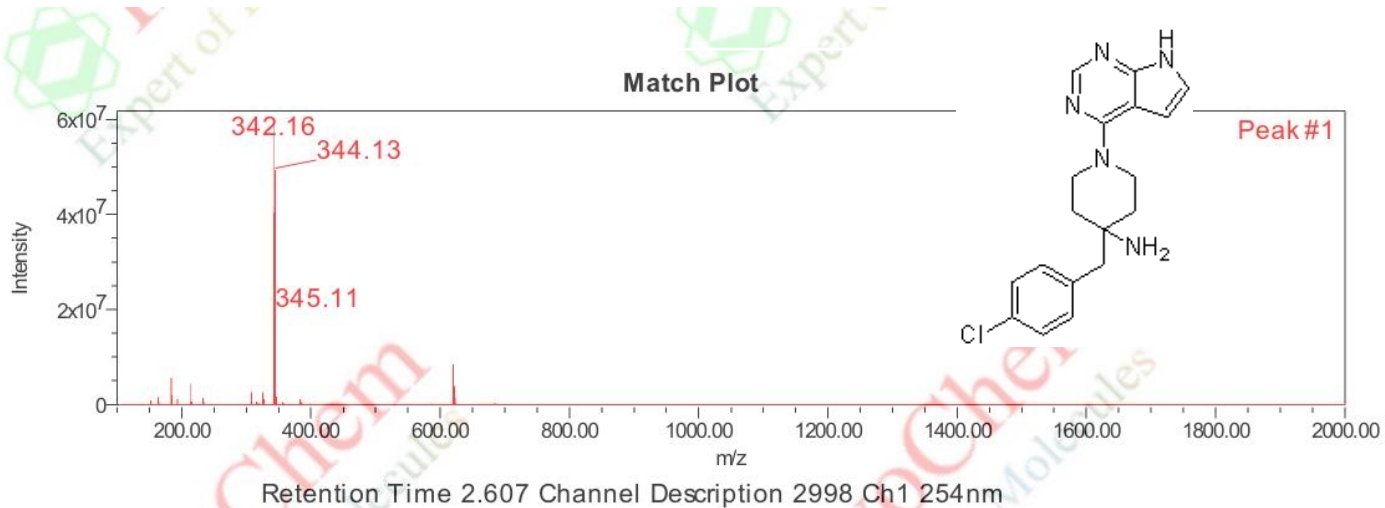


Channel Description: 1: 100.00-2000.00 ES+, Centroid, CV=30

	Channel Description	RT	Area	% Area	Height	Base Peak (Combined) (m/z)
1	1: 100.00-2000.00 ES+, Centroid, CV=30	2.836	1086258534	100.00	89915865	344.13

Product Name: CCT128930  
 InvivoChem Cat #: V0163  
 CAS #: 885499-61-6  
 Batch #: V016302  
 Formula: C<sub>18</sub>H<sub>20</sub>CLN<sub>5</sub>  
 Molecular Weight: 341.84

# LCMS Analysis for V016302 CCT128930



Product Name: CCT128930  
InvivoChem Cat #: V0163  
CAS #: 885499-61-6  
Batch #: V016302  
Formula: C<sub>18</sub>H<sub>20</sub>CLN<sub>5</sub>  
Molecular Weight: 341.84