

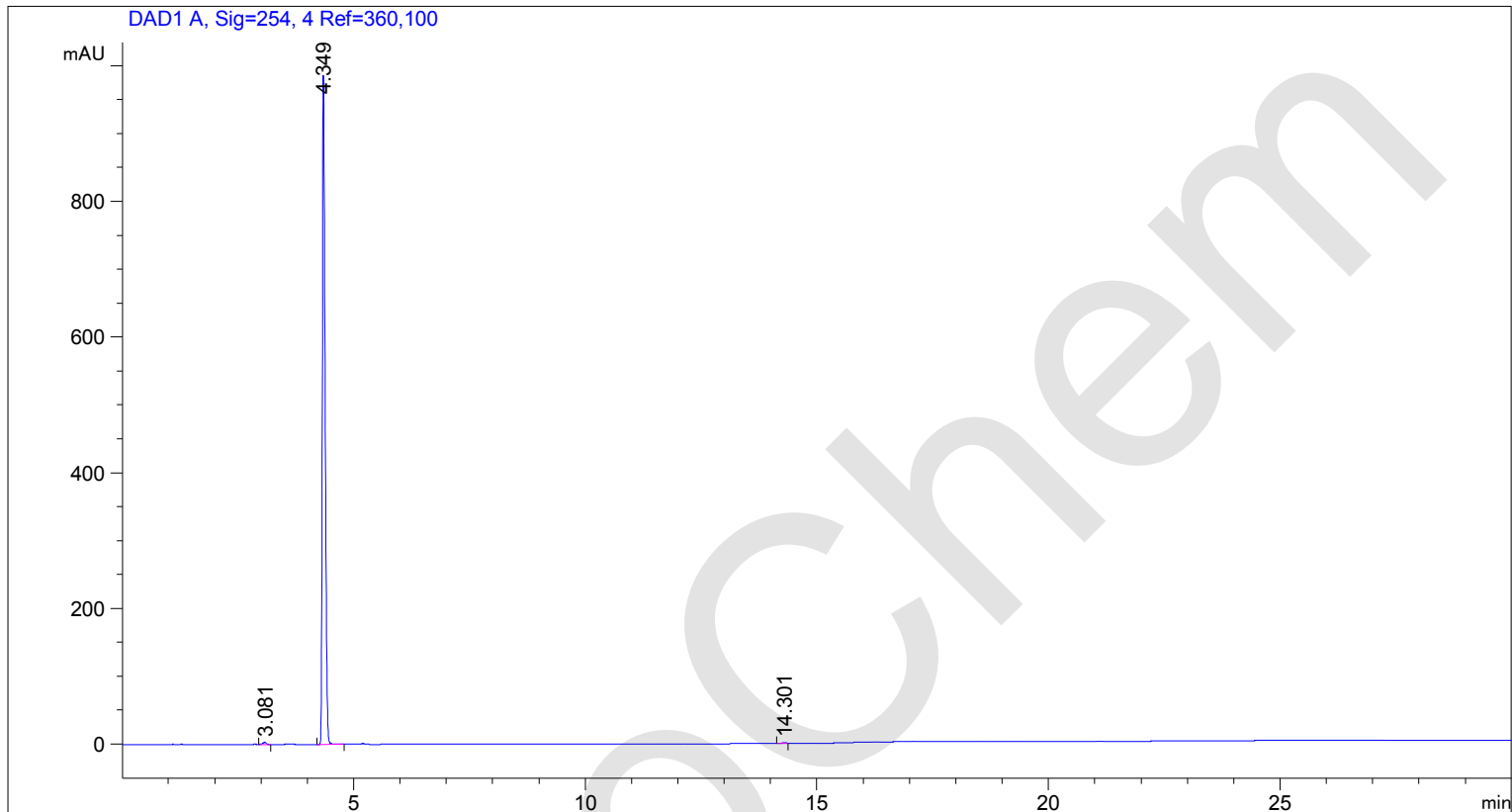


Acq. Operator : SYSTEM  
Acq. Instrument : 12601c

Seq. Line : 1  
Location : Vial 1

Inj Volume : 5.000 µl

Additional Info : Peak(s) manually integrated



### Area Percent Report

Sorted By : Signal  
Multiplier : 1.0000  
Dilution : 1.0000  
Use Multiplier & Dilution Factor with ISTDs

Signal 1: DAD1 A, Sig=254,4 Ref=360,100

Peak #	RetTime [min]	Type	Width [min]	Area [mAU*s]	Height [mAU]	Area %
1	3.081	BB	0.0754	14.40424	3.03307	0.3332
2	4.349	BB	0.0668	4298.86133	987.34070	99.4438
3	14.301	BV	0.0968	9.64128	1.46472	0.2230

Totals : 4322.90684 991.83848

\*\*\* End of Report \*\*\*