

V149101 Cinacalcet HCl -hplc

Injection Date : 20 Jan 20

Sample Name : 364782-34-3

Method Info : Mobile Phase: A: water(0.01%TFA) B: ACN(0.01%TFA)

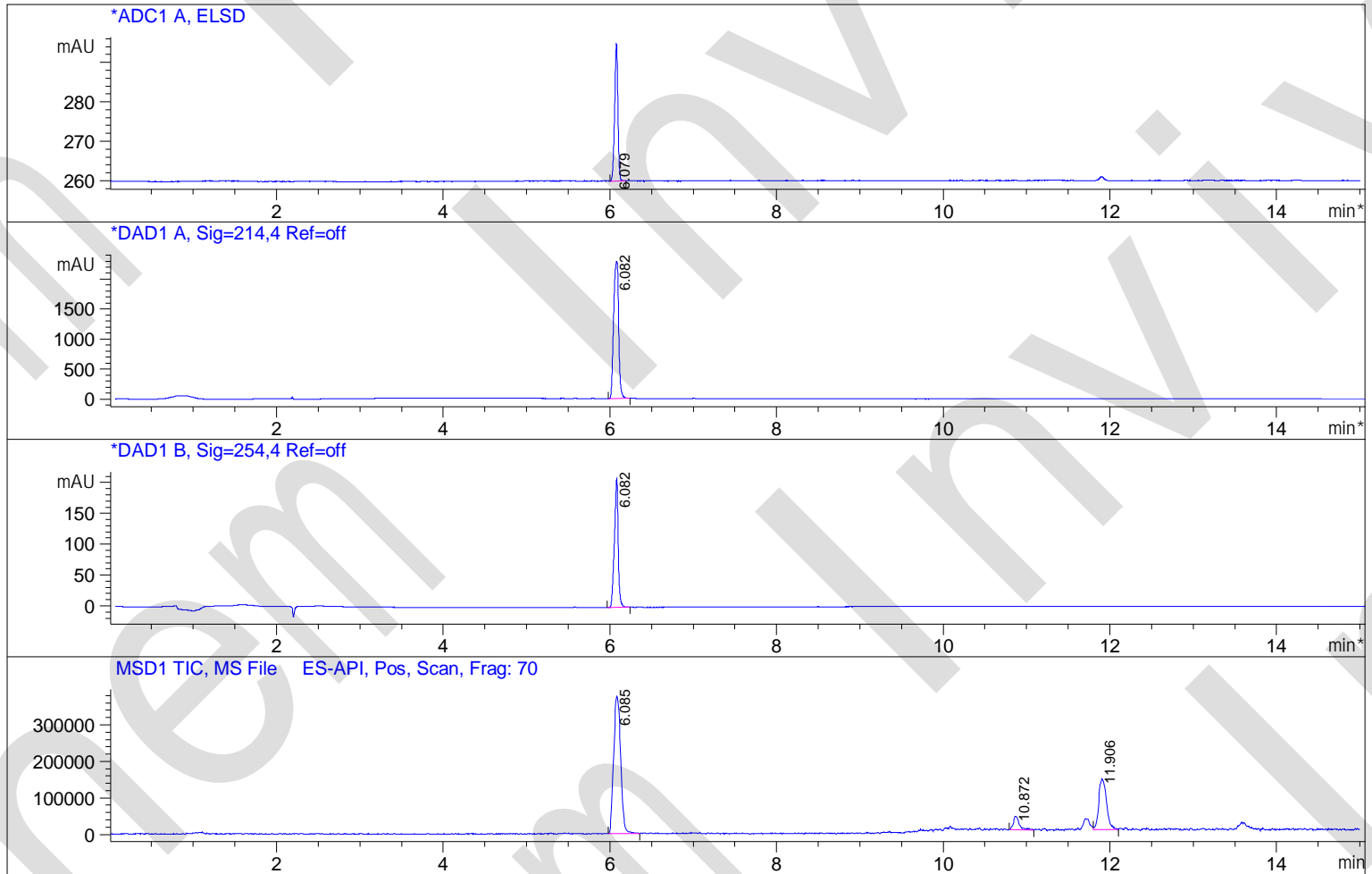
Gradient: 5% increase to 95%B within 7.5 min, 95%B for 7.5 min.

Flow Rate: 1.0ml/min

Column: Sunfire C18, 4.6*150mm, 3.5um

Column Temperature: 45 C

Detection: UV(214,4nm) and MS(ESI, Pos mode, 110 to 1500 amu)



Integration Results for ADC1 A, ELSD

RetTim	Width	Area	Height	Area%
6.08	0.04	93.91	34.87	100.00

Integration Results for DAD1 A, Sig=214,4 Ref=off

RetTim	Width	Area	Height	Area%
6.08	0.07	9494.19	2288.11	100.00

Integration Results for DAD1 B, Sig=254,4 Ref=off

RetTim	Width	Area	Height	Area%
6.08	0.04	655.88	208.86	100.00