

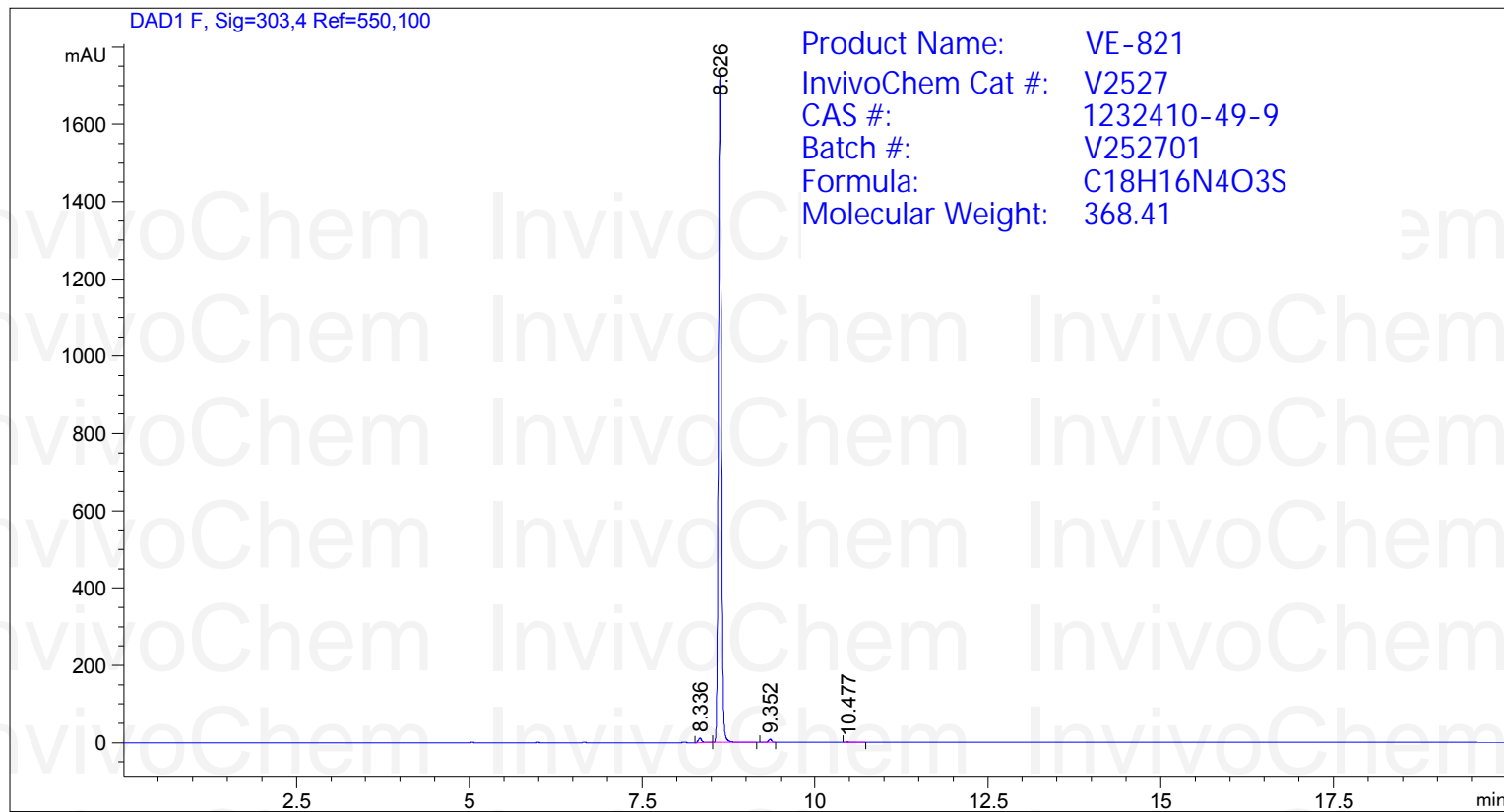
HPLC Analysis for VE-821



Acq. Operator : SYSTEM
Acq. Instrument : 12601c

Seq. Line : 3
Location : Vial 83

Inj Volume : 2.000 µl



Area Percent Report

Sorted By : Signal
Multiplier : 1.0000
Dilution : 1.0000
Use Multiplier & Dilution Factor with ISTDs

Signal 1: DAD1 F, Sig=303,4 Ref=550,100

Peak #	RetTime [min]	Type	Width [min]	Area [mAU*s]	Height [mAU]	Area %
1	8.336	BV	0.0502	38.63116	11.64078	0.5250
2	8.626	VB	0.0471	5256.30957	1722.05908	99.0459
3	9.352	BV	0.0480	26.45341	8.56306	0.3465
4	10.477	BB	0.0633	7.06972	1.64017	0.0827

Totals : 5328.46386 1743.90309