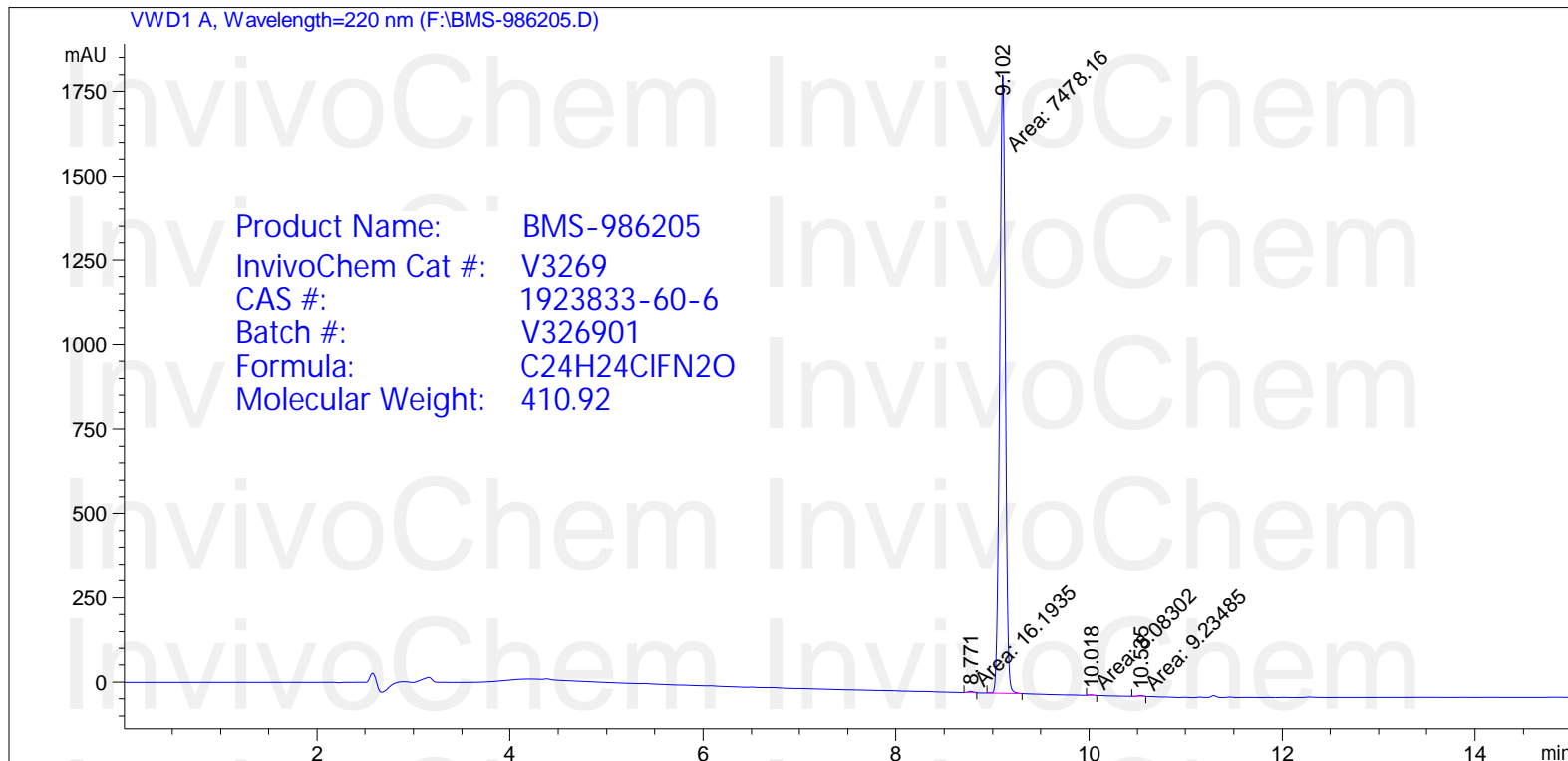


# HPLC Analysis for BMS-986205



```

=====
Acq. Operator   : 系统                               Seq. Line :    2
Acq. Instrument : LC1260                             Location  : Vial 34
Injection Date  : 5/31/2018 2:28:53 PM              Inj       :    1
                                                    Inj Volume: 0 µl
Different Inj Volume from Sequence !    Actual Inj Volume : 5 µl
Acq. Method     : E:\DATA\Yi zhijun\Data\20180526\20180520-1 2018-05-31 14-02-19\10-90 AD 220
               : 15MIN.M
Last changed    : 5/31/2018 2:20:16 PM by 系统
Analysis Method : D:\PUBLIC\METHOD\10-90 AB 6MIN.M
Last changed    : 5/31/2018 10:25:38 PM by WSF
               : (modified after loading)
    
```



### Area Percent Report

```

=====
Sorted By      : Signal
Multiplier     : 1.0000
Dilution       : 1.0000
Use Multiplier & Dilution Factor with ISTDs
    
```

Signal 1: VWD1 A, Wavelength=220 nm

Peak #	RetTime [min]	Type	Width [min]	Area [mAU*s]	Height [mAU]	Area %
1	8.771	MM	0.0624	16.19351	4.32732	0.2156
2	9.102	MM	0.0680	7478.16357	1833.71729	99.5539
3	10.018	MM	0.0664	8.08302	2.02855	0.1076

# HPLC Analysis for BMS-986205



Peak #	RetTime [min]	Type	Width [min]	Area [mAU*s]	Height [mAU]	Area %
4	10.535	MM	0.0625	9.23485	2.46116	0.1229

Totals : 7511.67495 1842.53431

=====  
\*\*\* End of Report \*\*\*

InvivoChem InvivoChem  
InvivoChem InvivoChem  
InvivoChem InvivoChem  
InvivoChem InvivoChem  
InvivoChem InvivoChem  
InvivoChem InvivoChem  
InvivoChem InvivoChem