

HPLC Analysis for V260601 CPI-455

Sorted By : Signal
Multiplier : 1.0000
Dilution : 1.0000
Use Multiplier & Dilution Factor with ISTDs

Signal 1: DAD1 A, Sig=220,4 Ref=off

Peak #	RetTime [min]	Type	Width [min]	Area [mAU*s]	Height [mAU]	Area %
1	7.501	BB	0.0533	3551.44434	1052.99536	100.0000

Totals : 3551.44434 1052.99536

Signal 2: DAD1 B, Sig=254,16 Ref=off

Peak #	RetTime [min]	Type	Width [min]	Area [mAU*s]	Height [mAU]	Area %
1	7.501	BB	0.0532	3540.67041	1054.18384	100.0000

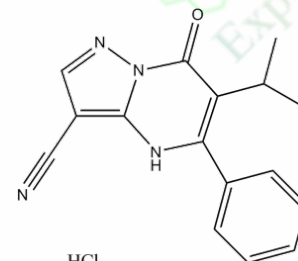
Totals : 3540.67041 1054.18384

Signal 3: DAD1 C, Sig=210,8 Ref=off

Peak #	RetTime [min]	Type	Width [min]	Area [mAU*s]	Height [mAU]	Area %
1	7.501	BB	0.0534	5318.82324	1574.85693	100.0000

Totals : 5318.82324 1574.85693

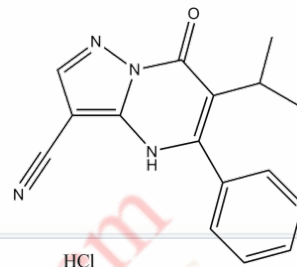
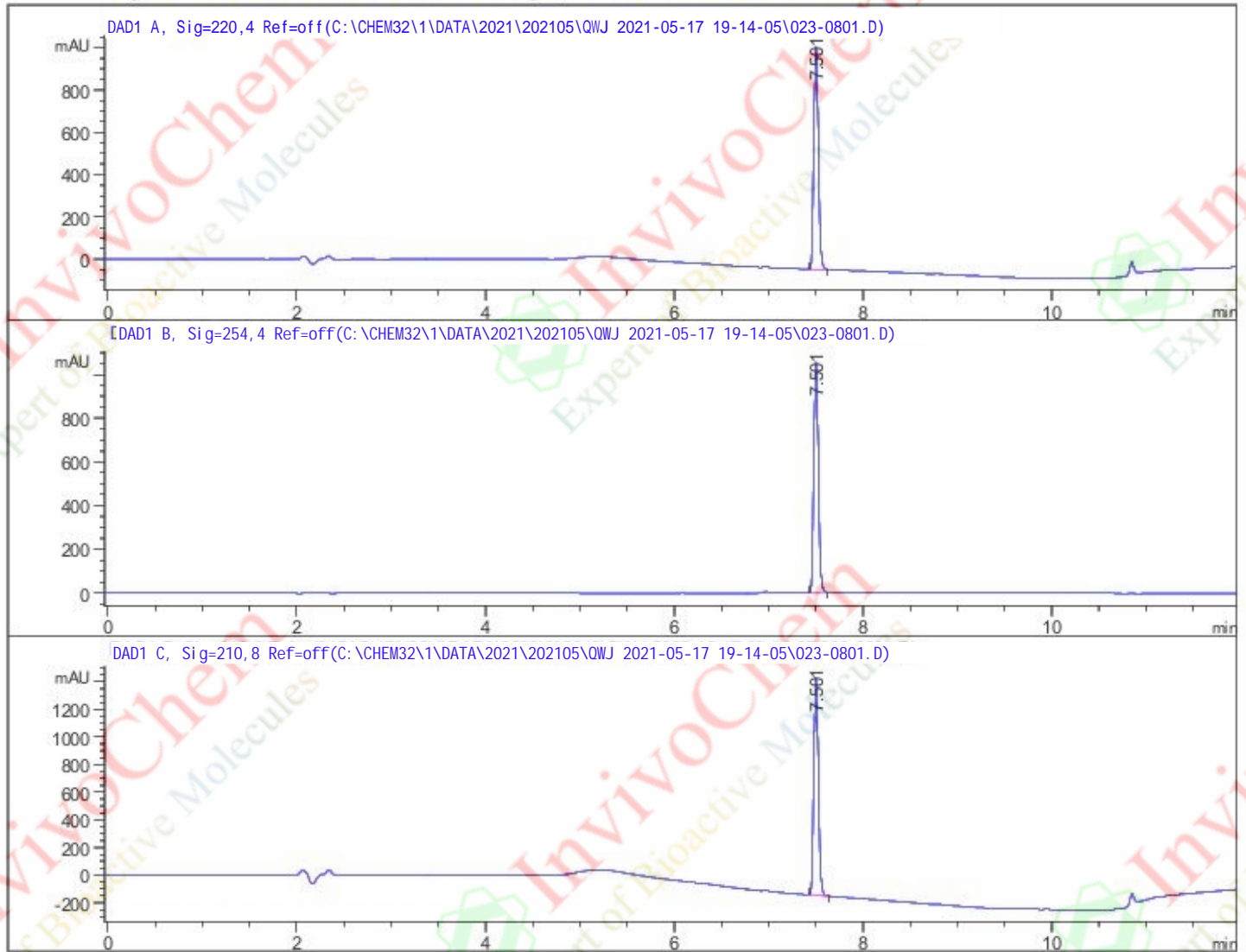
*** End of Report ***



HCl

Product Name: CPI-455
InvivoChem Cat #: V2606
CAS #: 1628208-23-0
Batch #: V260601
Formula: C₁₆H₁₅ClN₄O
Molecular Weight: 314.77

HPLC Analysis for V260601 CPI-455



Product Name: CPI -455
InvivoChem Cat #: V2606
CAS #: 1628208-23-0
Batch #: V260601
Formula: C₁₆H₁₅ClN₄O
Molecular Weight: 314.77