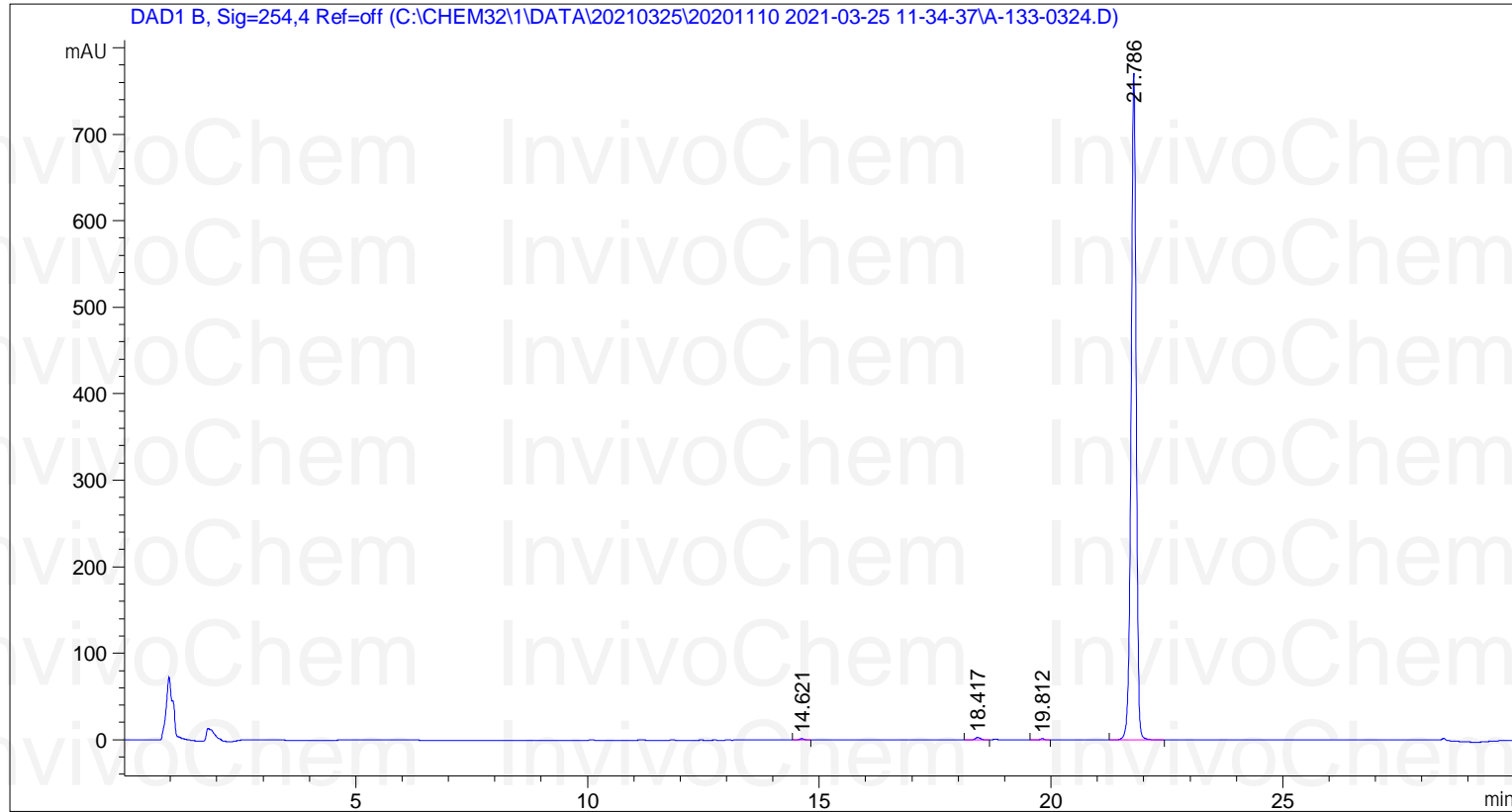


```

=====
Acq. Operator   : admin                      Seq. Line :    1
Acq. Instrument : LC-1260                   Location  : P1-E9
Injection Date  : 3/25/2021 11:35:43 AM     Inj       :    1
                                           Inj Volume: 5.000 µl

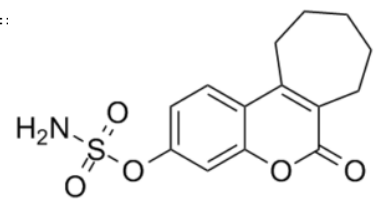
Acq. Method     : C:\Chem32\1\Data\20210325\20201110 2021-03-25 11-34-37\5-90-30min.M
Last changed    : 3/25/2021 11:34:37 AM by admin
Analysis Method : C:\Chem32\1\Methods\5-90-30min.M
Last changed    : 3/15/2021 2:38:22 PM by admin
Additional Info  : Peak(s) manually integrated
    
```



Area Percent Report

```

Sorted By      : Signal
Multiplier     : 1.0000
Dilution       : 1.0000
Use Multiplier & Dilution Factor with ISTDs
    
```



Signal 1: DAD1 B, Sig=254,4 Ref=off

Peak #	RetTime [min]	Type	Width [min]	Area [mAU*s]	Height [mAU]	Area %
1	14.621	BB	0.1214	11.51012	1.43781	0.1999
2	18.417	BB	0.1333	25.71115	2.90423	0.4465
3	19.812	BB	0.0981	10.23547	1.56844	0.1777
4	21.786	BB	0.1125	5711.15479	770.70844	99.1759

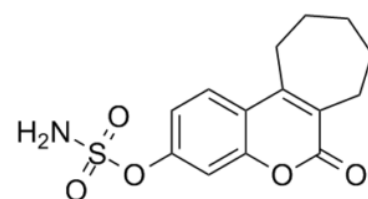
```

Product Name:      Irosustat
Invi voChem Cat #: V4046
CAS #:             288628-05-7
Batch #:           V404601
Formula:           C14H15N05S
Mol ecul ar Weight: 309.34
    
```

Totals : 5758.61153 776.61892

=====
*** End of Report ***

InvivoChem InvivoChem InvivoChem
InvivoChem InvivoChem InvivoChem
InvivoChem InvivoChem InvivoChem
InvivoChem InvivoChem InvivoChem
InvivoChem InvivoChem InvivoChem
InvivoChem InvivoChem InvivoChem
InvivoChem InvivoChem InvivoChem
InvivoChem InvivoChem InvivoChem
InvivoChem InvivoChem InvivoChem
InvivoChem InvivoChem InvivoChem
InvivoChem InvivoChem InvivoChem
InvivoChem InvivoChem InvivoChem
InvivoChem InvivoChem InvivoChem
InvivoChem InvivoChem InvivoChem



Product Name: Irosustat
InvivoChem Cat #: V4046
CAS #: 288628-05-7
Batch #: V404601
Formula: C₁₄H₁₅N₀S₅
Molecular Weight: 309.34