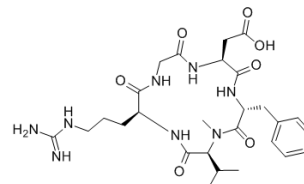


HPLC Analysis for Cilengitide



HPLC Report



Cilengitide

Sample name: xljt

Sequence:

Mobile phase: A: 0.1% TFA in H₂O

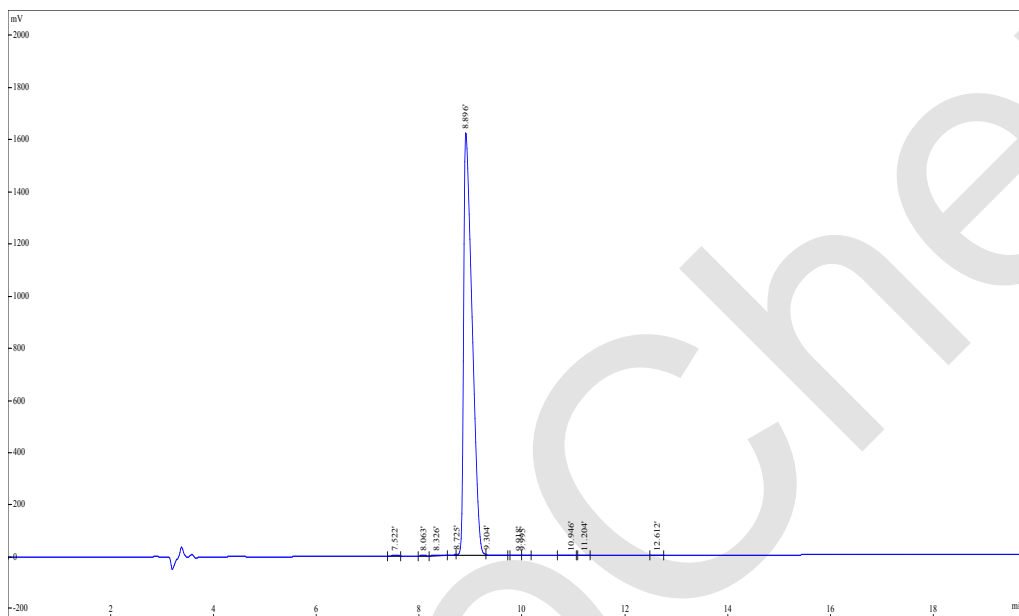
B: 0.1% TFA in ACN

Gradient: 24-44%B in 20min Flow rate: 1.0ml/min

Column: Welch, C18, 4.6*150mm, 5um

Inject Date: 04/10/2018

Inj.Vol: 10uL



Area Percent Report

VWD: 220nm

Results

Pk#	Retention Time	Area Percent(%)	Area
1	7.522	0.04838	9021
2	8.063	0.02354	4388
3	8.326	0.1229	22916
4	8.725	0.1266	23606
5	8.896	99.27	18508573
6	9.304	0.1363	25418
7	9.918	0.08515	15876
8	9.995	0.04006	7469
9	10.946	0.0301	5612
10	11.204	0.06312	11768
11	12.612	0.05326	9930
Total		100	18644577